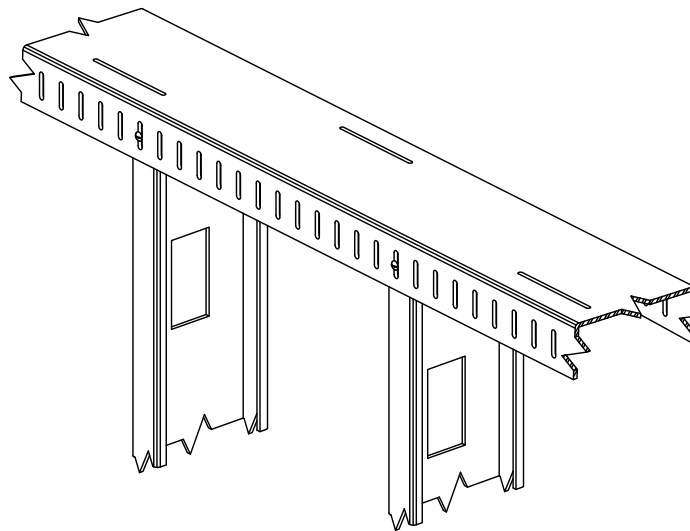
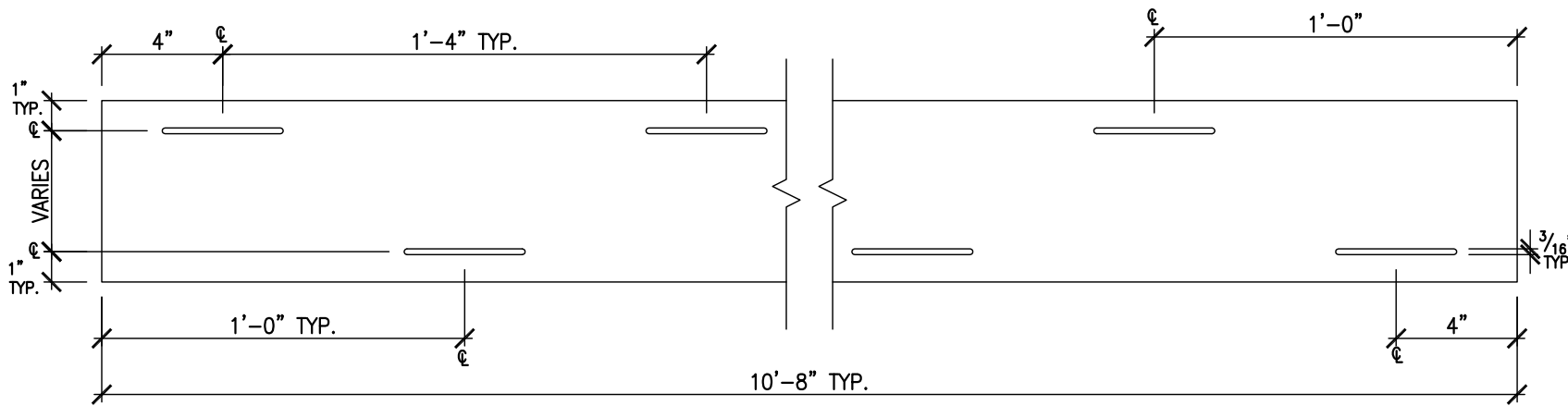


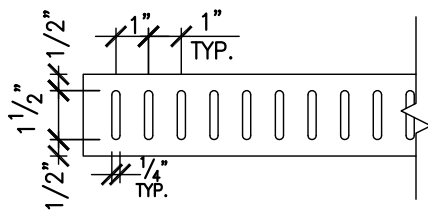
TOP VIEW @ 1-5/8", 2-1/2", 3-5/8", 4" STT
(SHOWN W/ OPTIONAL SLOTS IN WEB)



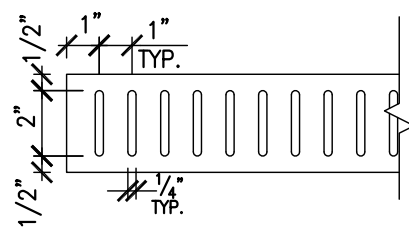
ISOMETRIC VIEW OF TYPICAL CONSTRUCTION
(SHOWN W/ OPTIONAL SLOTS IN WEB)



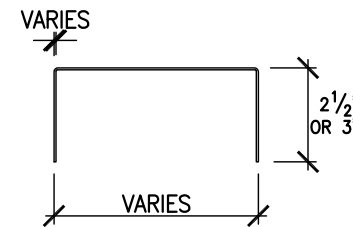
TOP VIEW @ 5-1/2", 6", 8", 10", 12" STT
(SHOWN W/ OPTIONAL SLOTS IN WEB)



SIDE VIEW @ 2-1/2" LEG STT



SIDE VIEW @ 3" LEG STT



FRONT VIEW OF STT

ALLOWABLE LATERAL LOAD FROM WALL STUD INTO STT:

STT THICKNESS	2 1/2" LEG	3" LEG
	ALLOWABLE POINT LOAD	ALLOWABLE POINT LOAD
33 MIL	113#	88#
43 MIL	188#	149#
54 MIL	349#	304#
68 MIL	516#	446#
97 MIL	717#	609#
118 MIL	903#	750#

NOTES:

- STUDS SPACED @ 16" O/C OR MORE.
- 33 MIL STUD AND HEAVIER ASSUMED FOR 33 AND 43 MIL SLOTTED TOP TRACK (STT). 43 MIL STUD AND HEAVIER ASSUMED FOR 54 MIL AND HEAVIER STT. 54 MIL STUD AND HEAVIER ASSUMED FOR 68 MIL AND HEAVIER STT. A THINNER GAUGE OF STUD CAN BE USED WITH THE STT OTHER THAN ASSUMED ABOVE, BUT THE ALLOWABLE POINT LOAD MUST BE REDUCED TO THE CORRESPONDING STUD GAUGE (I.E. 43 MIL STUD USED WITH 68 MIL STT RESULTS IN AN ALLOWABLE POINT LOAD OF 188 POUNDS).
- #8 SMS ASSUMED FOR 33 AND 43 MIL STT. #10 SMS ASSUMED FOR 54 MIL AND HEAVIER STT. IF #8 SMS ARE TO BE SUBSTITUTED FOR #10 SMS, SEE CHART BELOW.

ALLOWABLE LATERAL LOAD FROM WALL STUD INTO STT W/ A #8 SMS:

TRACK THICKNESS	2 1/2" LEG	3" LEG
	ALLOWABLE POINT LOAD	ALLOWABLE POINT LOAD
33 MIL	113#	88#
43 MIL	188#	149#
54 MIL	328#	286#
68 MIL	485#	419#
97 MIL	674#	572#
118 MIL	849#	705#

NOTES:

- SAME ASSUMPTIONS AS CHART ABOVE APPLY EXCEPT #3.

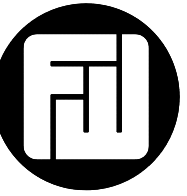
GERNERAL NOTES:

- AVAILABLE DEPTHS OF STT: 1 5/8", 2 1/2", 3 5/8", 4", 5 1/2", 6", 8", 10", AND 12"
- 1 5/8" AND 2 1/2" STT DEPTHS ONLY AVAILABLE IN 2 1/2" LEG. ALL OTHER STT DEPTHS AVAILABLE IN BOTH 2 1/2" AND 3" LEGS.
- 1 5/8" AND 2 1/2" STT DEPTHS ONLY AVAILABLE IN 33 MIL TO 68 MIL. ALL OTHER STT DEPTHS AVAILABLE IN 33 MIL TO 118 MIL.

- TRACK DESIGNATION:



- MEMBER DEPTH:** ALL MEMBER DEPTHS ARE TAKEN IN 1/100 INCHES. (EXAMPLE: 6"=600/100 INCHES)
- STYLE:** SLOTTED TOP TRACK
- LEG WIDTH:** ALL LEG WIDTHS ARE TAKEN IN 1/100 INCHES. (EXAMPLE: 2-1/2"= 250/100 INCHES)
- MATERIAL THICKNESS:** THE MINIMUM BASE METAL THICKNESS IN MILS. (EXAMPLE: 0.054IN.=54MILS; 1 MIL=1/1000 INCH) MINIMUM BASE METAL THICKNESS REPRESENTS 95% OF THE DESIGN THICKNESS.
- CONNECTION OF STT TO STRUCTURE ABOVE TO BE DESIGNED BY ENGINEER OF RECORD FOR REQUIRED LOADING.
- CAPACITIES OF STUD TO BE VERIFIED BY ENGINEER OF RECORD.
- LOADS ASSUME STUD IS NOT WITHIN 8" OF TRACK ENDS. REDUCE CAPACITY BY 50% IF STUD IS AT END OF STT.



FICCADENTI WAGGONER & CASTLE
Consulting Structural Engineers, Inc.

3100 Oak Road, Suite 390
Walnut Creek, California 94597
Tel: (925) 280-0098
Fax: (925) 280-0096

OLMAR SUPPLY
INC.

2140 Research Drive
Livermore, California 94551
Tel: (925) 447-3500
Fax: (925) 447-1595

REV.	DATE	DESCRIPTION
△		
△		
△		
△		
△		
△		
△		
△		

DRAWN BY E.E.C.
SCALE N.T.S.
DATE 12.08.11
REVISION NO. △

SHEET TITLE

SLOTTED
TOP TRACK

PROJECT

DEVELOPMENT

SITE LOCATION

PROJECT NO.
B11-103

SHEET NO.