

3 5/8" WALL SCHEDULES

Table with 3 columns: WALL HEIGHT, (1) LAYER GYPSUM TOP TRACK THICKNESS, (2) LAYER GYPSUM TOP TRACK THICKNESS. Rows for wall heights from 0'-0" to 18'-1" to 20'-0".

\* - USE 54 MIL SLOTTED TRACK AT OPENINGS LARGER THAN 8'-3". SLOTTED TRACK TO EXTEND MINIMUM 1'-0" BEYOND JAMB STUD.

4" WALL SCHEDULES

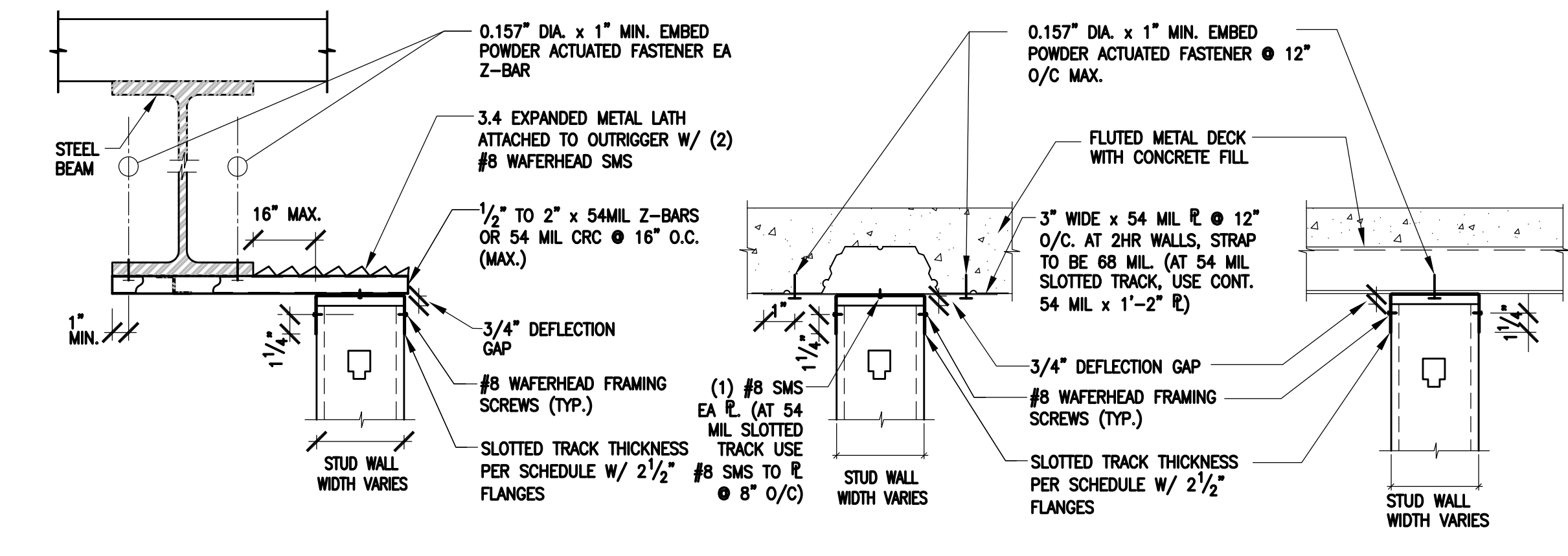
Table with 3 columns: WALL HEIGHT, (1) LAYER GYPSUM TOP TRACK THICKNESS, (2) LAYER GYPSUM TOP TRACK THICKNESS. Rows for wall heights from 0'-0" to 18'-1" to 20'-0".

\* - USE 54 MIL SLOTTED TRACK AT OPENINGS LARGER THAN 8'-3". SLOTTED TRACK TO EXTEND MINIMUM 1'-0" BEYOND JAMB STUD.

6" WALL SCHEDULES

Table with 3 columns: WALL HEIGHT, (1) LAYER GYPSUM TOP TRACK THICKNESS, (2) LAYER GYPSUM TOP TRACK THICKNESS. Rows for wall heights from 0'-0" to 18'-1" to 20'-0".

\* - USE 54 MIL SLOTTED TRACK AT OPENINGS LARGER THAN 8'-3". SLOTTED TRACK TO EXTEND MINIMUM 1'-0" BEYOND JAMB STUD.



WALL OFFSET I BEAM

WALL II TO FLUTES

WALL I TO FLUTES

TYP. TOP CONNECTION DETAILS

1 1/2\"/>

4

TOP CONNECTION

HEADER-1 HR

HEADER-2 HR

JAMB-1 HR

JAMB-2 HR

SILL-1 HR

SILL-2 HR

STUD

STUD

NOTES:

- 1. 1 HR WALL WEIGHT IS 6 PSF. 2 HOUR WALL WEIGHT IS 11 PSF.
2. 1 HR WALLS ARE DESIGNED FOR 5 PSF LATERAL LOAD. 2 HR WALLS ARE DESIGNED FOR 7.5 PSF LATERAL LOAD.
3. WALLS DESIGNED FOR Ip = 1.5 AND MAX Sps = 1.35g.
4. #10 SMS MAY BE SUBSTITUTED FOR #8 SMS ON A 1:1 BASIS AT CONTRACTOR'S OPTION.
5. #10 SMS ARE TO BE USED AT ALL 14 GAUGE AND HEAVIER APPLICATIONS.
6. STUDS TO BE ROLLED BY A MANUFACTURER THAT IS A MEMBER OF SSMA ICC (ICBO) ER-4349P.

- 7. LISTED HEADERS, SILLS, AND JAMBS MAY BE UTILIZED FOR SPANS AND/OR HEIGHTS LESS THAN THE MAXIMUM [ALLOWABLE] SPANS & HEIGHTS SPECIFIED IN THE ABOVE SCHEDULES.
8. ALL WELDING TO BE PERFORMING WITH CERTIFIED LIGHT-GAUGE WELDERS CERTIFIED FOR ALL APPROPRIATE DIRECTION CONFORMING TO AWS D1.3. WELDING RODS TO CONFORM TO THE FOLLOWING:
A. 43 MIL E60XX
B. 54 MIL AND HEAVIER E70XX OR E6013
WELDING WIRE FOR FCAW TO CONFORM TO THE FOLLOWING:
A. 18GA.
B. 16GA. AND HEAVIER



FICCADENTI WAGGONER and CASTLE Structural Engineers
3100 Oak Road, Suite 300
Walnut Creek, CA 94597
Telephone: (925) 280-0098
Facsimile: (925) 280-0096
www.fwcc.com



QLMAR SUPPLY
Quality Products & Excellent Service for the Construction Industry
WWW.QLMARSUPPLY.COM
2140 RESEARCH DR.
LIVERMORE, CA 94551
Tel: (925) 447-3500

INTERIOR METAL STUD FOR OSHPD
TYPICAL DETAILS

TOP CONNECTION

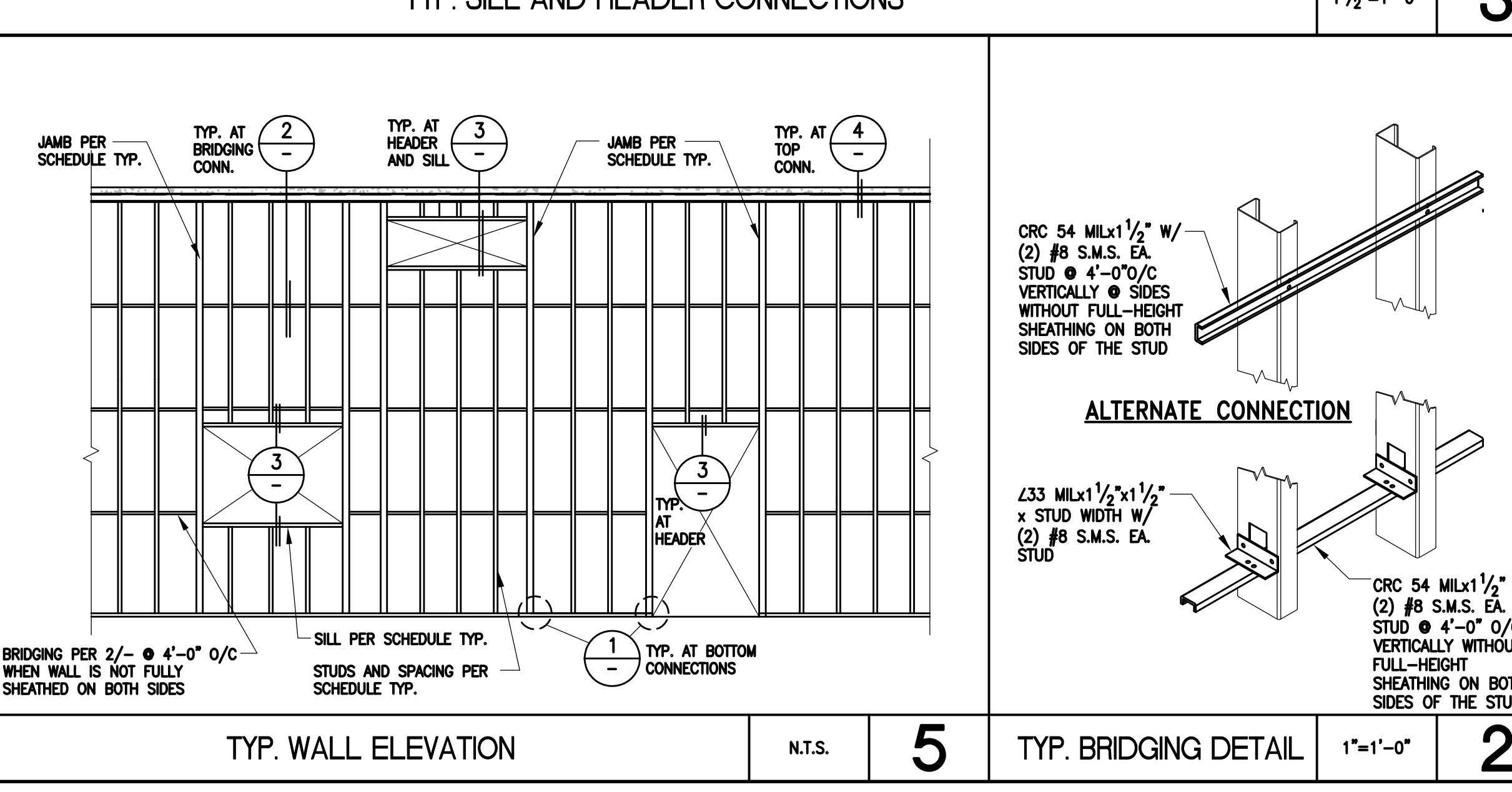
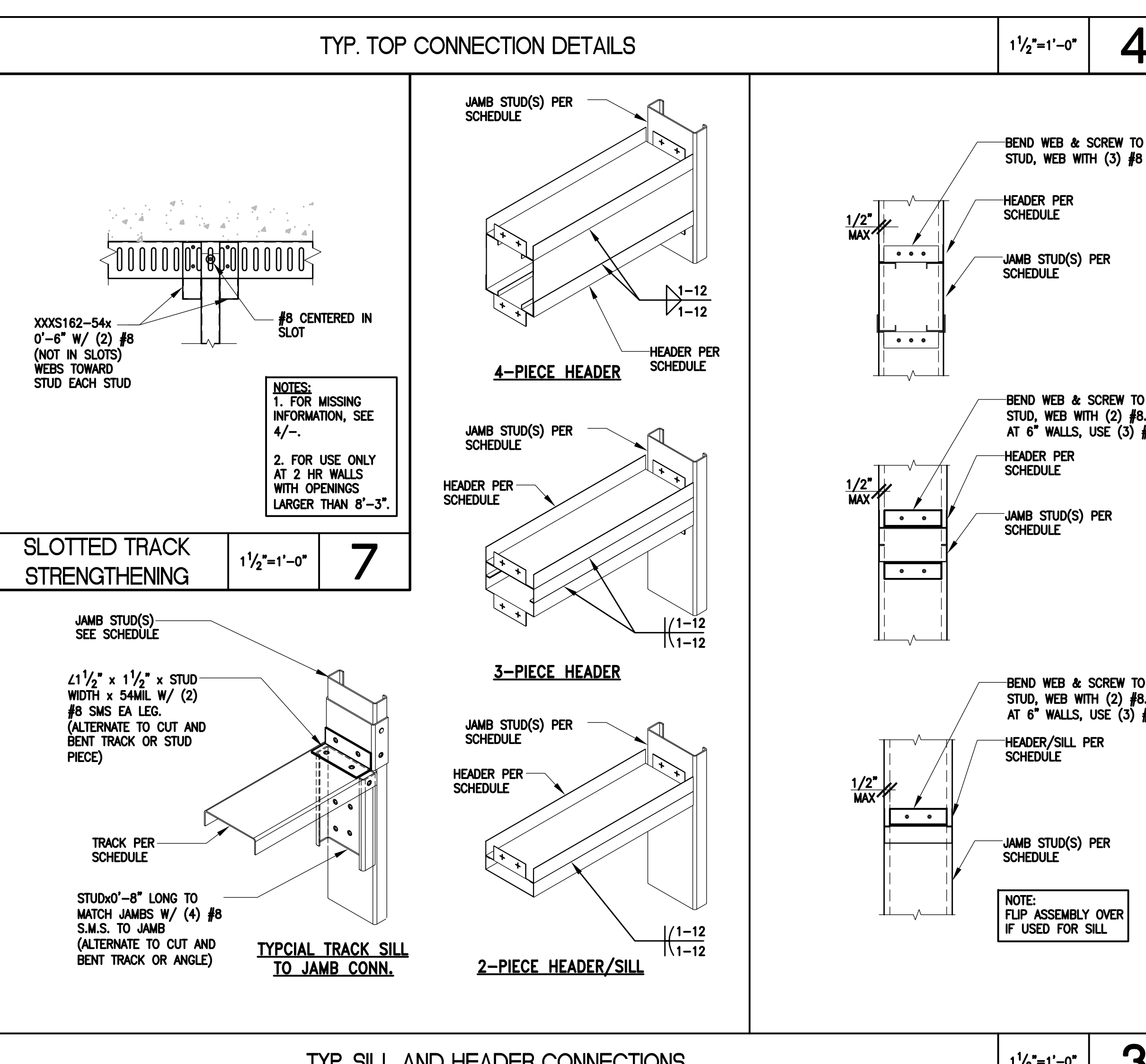
4-PIECE

3-PIECE

2-PIECE

STUD

BOTTOM CONNECTION



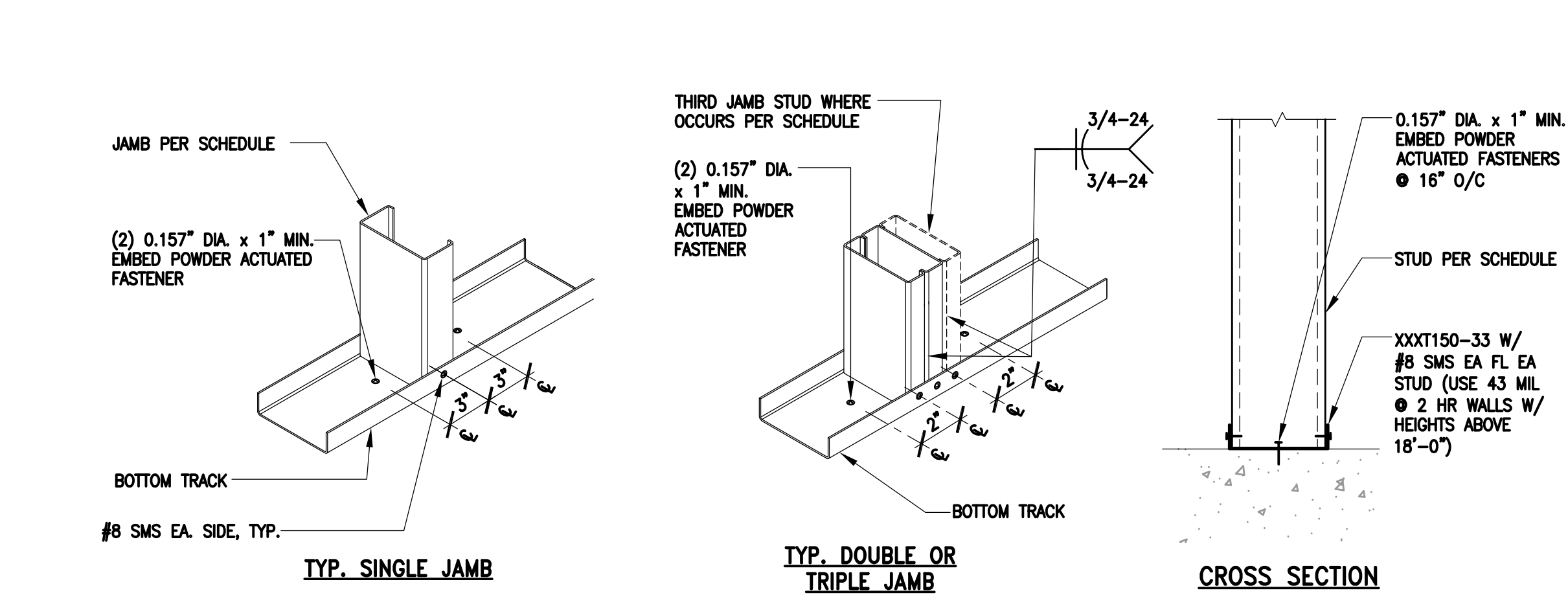
TYP. WALL ELEVATION

N.T.S.

TYP. BRIDGING DETAIL

1\"/>

2



TYP. BOTTOM CONNECTION DETAILS

1 1/2\"/>

1

Table with 3 columns: REV., DATE, DESCRIPTION. Includes fields for DRAWN BY (RLB), DATE (10-31-12), SHEET TITLE (TYPICAL DETAILS), PROJECT NO. (B12-108), and SHEET NO.